



# 2018 West Marine World Championships



Eastern Yacht Club  
MARBLEHEAD, MA



West Marine  
For your life on the water.

## SAILING INSTRUCTIONS

### 2018 West Marine J/70 World Championship

September 22 to September 29, 2018

Hosted by Eastern Yacht Club  
Marblehead, MA USA

The organizing authority (“OA”) is the Eastern Yacht Club in conjunction with the International J/70 Class Association (IJCA)

Website: <https://yachtscoring.com/emenu.cfm?eID=4512>

## 1 RULES

- 1.1 The regatta will be governed by the rules as defined in *The Racing Rules of Sailing* (RRS).
- 1.2 IJCA Class Rules Part III Sections I.3 (Support Boats) and I.4 (Corinthian Division) will apply.
- 1.3 Only the US Sailing prescriptions to RRS, 60.3, 61.4, 67, 76.1 will apply and are stated in full in Attachment C.
- 1.4 Boats shall be kept in their assigned places as directed by the OA when ashore. While afloat, boats shall be kept on their OA-assigned mooring while afloat or at a mooring/dock they arrange in Marblehead Harbor. If at a privately arranged mooring/dock in Marblehead Harbor, the OA shall be informed of the boat's location.
- 1.5 If there is a conflict between languages the English text will take precedence.
- 1.6 The Equipment Rules of Sailing will apply.
- 1.7 The international jury may impose penalties less than disqualification (DPI), for violation of the class rules and racing rules other than those of RRS Part 1 and Part 2. This changes RRS 64.1 (a) and NOR 2.10.
- 1.8 RRS 30.4 – the third sentence is modified so that in the event a General Recall is signaled during a Black Flag start, “...the race committee shall display her sail or bow number before the next warning signal for that race...”

## 2 BOW NUMBERS AND EVENT IDENTIFICATION STICKERS

- 2.1 All required bow numbers and sponsor or event identification stickers, decals and flags shall be displayed from the close of check-in through the end of the regatta. It is the

responsibility of the competitor to ensure that the bow numbers and stickers remain on the boat and obtain replacements as necessary.

**2.2** Bow numbers will be supplied and applied by the OA

**2.3** Sponsor stickers, decals and flags will be placed on the bow or boom as directed by the OA. If required to be placed on the bow, event identification stickers shall be placed immediately aft of the bow numbers.

### **3 NOTICES TO COMPETITORS**

**3.1** Notices to competitors will be posted on the official notice board which is the glass wall of the Eastern Yacht Club sailing office. As a courtesy only, notices will also be posted on Yacht Scoring, [www.yachtscoring.com](http://www.yachtscoring.com).

**3.2** Any questions regarding the sailing instructions shall be submitted in writing to the race committee. The questions and any answers will be posted on the official notice board.

### **4 CHANGES TO SAILING INSTRUCTIONS**

**4.1** Any change to the sailing instructions will be posted before 0900 on the day it will take effect, except that any change to the schedule of races will be posted by 2000 on the day before it will take effect.

### **5 SIGNALS MADE ASHORE**

**5.1** Signals made ashore will be displayed on the flagpole at the Casey terrace of Eastern Yacht Club.

**5.2** When flag AP is displayed ashore, '1 minute' is replaced with 'not less than 60 minutes' in the race signal AP. This changes RRS Race Signals.

**5.3** When flag B (BRAVO) is displayed ashore with one sound signal, "One hour before the protest time limit". When lowered with one sound signal "Protest time limit has ended". This changes RRS Race Signals.

## 6 SCHEDULE AND FORMAT

6.1 The schedule for the regatta is as follows:

Date	Time	Event
Friday Sept 21	1300-1800	Check-in and Inspection
Saturday Sept 22	0900-1800	Check-in and Inspection
Sunday Sept 23	0900-1800	Check-in and Inspection
Monday Sept 24	0900-1200 1200 1400  1745  1800 To follow To follow  1800	Check-in and Inspection Competitors briefing Warning signal for practice race  Teams gather under the event tent on the lawn at EYC  Opening Ceremony (Tent) Competitors Meeting (Tent) Reception (Tent)  All boats shall be afloat
Tuesday Sept 25	0845 1100 After racing	Competitors Briefing First warning signal Social at Eastern Yacht Club
Wednesday Sept 26	0845 1100 After racing	Competitors Briefing First warning signal Social at Eastern Yacht Club
Thursday Sept 27	0845 1100 After racing	Competitors Briefing First warning signal Social at Eastern Yacht Club
Friday Sept 28	0845 1100 After racing	Competitors Briefing First warning signal Social at Eastern Yacht Club
Saturday Sept 29	0845 1100 1800 TBD	Competitors Briefing First warning signal Awards at Eastern Yacht Club Haul Out/De-rig
Sunday Sept 30	TBD	Haul Out/De-rig
Monday Oct 1	TBD	Haul Out/De-rig

6.2 Fourteen (14) races are scheduled.

No more than three races may be sailed on any race day; however, the RC may change the number of races to be sailed by proper notice to competitors during the regatta.

6.3 On the last scheduled day of racing no warning signal will be made after 1430.

## 7 CLASS FLAG

7.1 A white flag with the J/70 logo will be the class flag for the event.

## 8 RACING AREA

8.1 Attachment A shows the location of the general location of the racing area(s) and harbor location

## 9 THE COURSES

- 9.1 The courses to be sailed will be windward-leeward. The diagrams in Attachment B show the course, including the order in which marks are to be passed, and the side on which each mark is to be left.
- 9.2 No later than the warning signal, the race committee will broadcast and display the course, bearing and distance to mark 1. Failure to broadcast or to receive this notification shall not constitute grounds for granting redress. This changes RRS 60.1(b) and 62.1(a).

## 10 MARKS

### 10.1 Description of the marks:

	Original Marks	New Mark per SI 12
Mark 1	Yellow Tetrahedron	Orange Tetrahedron
Mark 1a (offset)	Yellow Tetrahedron	Orange Tetrahedron
Mark 2 s (Gate)	Yellow Tetrahedron	Orange Tetrahedron
Mark 2 p (Gate)	Yellow Tetrahedron	Orange Tetrahedron
Starting Marks	RC vessels	RC vessels
Finish Marks	RC vessels	RC vessels

### 10.2 Mark 2 will be a GATE consisting of two marks (mark 2p and 2s).

- (a) If only one gate mark is set, boats shall leave the single mark to port.
- (b) Except when there is a change of course, the gate will be positioned approximately to windward of the RC mid-line signal vessel at a distance to the discretion of the RC.

10.3 A race committee vessel signalling a change of a leg of the course is a mark as provided in SI 12.2.

## 11 THE START

### 11.1 The starting line.

#### 11.1.1. Two Segment Line (3 RC vessels starting line)

- (a) The starting line will consist of three race committee vessels: port end line vessel, mid-line signal vessel, and starboard end line vessel.
- (b) The starting line will be two-line segments: one between a staff displaying an orange flag on the mid-line signal vessel and a staff displaying an orange flag on the port end line vessel, the other between a staff displaying an orange flag on the mid-line signal vessel and a staff displaying an orange flag on the starboard end line vessel.

#### 11.1.2. One Segment Line (2 RC vessels starting line)

If the RC is unable to establish a 3 RC vessel start line, a 2 RC vessel starting line will be used. The starting line will be between staffs displaying orange flags on the starting marks.

11.2 A boat that does not start within 6 minutes after her starting signal will be scored DNS without a hearing. This changes RRS A4 and A5.

11.3 Individual and general recall flags will be displayed on the mid-line signal vessel in accordance with RRS 29.1/29.2 and may be displayed by the race committee pin end starting line vessels as a courtesy. This changes RRS 29.1 and 29.2.

11.4 Boats subject to individual recall under RRS 29.1 will be broadcast on the VHF channel 78 using sail numbers or bow numbers as a courtesy. The RC will broadcast twice the boats that are OCS; it will not alter this list based on a boat's actions after the start.

- 11.5 The timing of a broadcast per SI 11.4, the sequence of the broadcasts or the failure to make the broadcasts, or the failure of a competitor to hear a broadcast shall not be grounds for granting redress. This changes RRS 62.1(a).
- 11.6 The race committee as a courtesy to competitors will broadcast the bow/sail numbers of boats that broke RRS 30.3 and RRS 30.4 as soon as possible after the last boat has finished the race.

## **12 CHANGE OF THE NEXT LEG OF THE COURSE**

- 12.1 To change the next leg of the course, the race committee will lay a new mark (or move the finishing line) and remove the original mark as soon as practicable. When in a subsequent change a new mark is replaced, it will be replaced by an original mark.
- 12.2 Except at a gate, boats shall pass between the race committee vessel signaling the change of the next leg and the nearby mark, leaving the mark to port and the race committee vessel to starboard. This changes RRS 28.

## **13 THE FINISH**

- 13.1 The finishing line will be between staffs displaying orange flags on two race committee vessels.
- 13.2 The finishing line will be located to leeward of the gate, unless there is a change of course on leg 4.

## **14 PENALTY SYSTEM**

- 14.1 The first two sentences of rule 44.1 are changed to: "A boat may take a One-Turn Penalty when she may have broken one or more rules of Part 2 or rule 31 in an incident while racing. However, when she may have broken one or more rules of Part 2 while in the zone around a mark other than a starting mark, her penalty shall be a Two-Turns Penalty."
- 14.2 After a race, a boat that may have broken one or more rules of Part 2 or rule 31 in an incident while racing may take a Post-Race Penalty for that incident. A boat takes a penalty by delivering a written notice to the race office that identifies the race number and when and where the incident occurred. The penalty shall be a 30% Scoring Penalty, calculated as stated in rule 44.3(c). However, rules 44.1(a) and (b) apply, and the penalty shall not be taken after a protest hearing involving the incident has begun.
- 14.3 If a member of the international jury witnesses an infringement of J/70 Class Rule C3.3 (Crew Positioning) or RRS 42, 49 or Class Rule C9.3(b)(1) (Bowsprit Use), they may indicate their observation by making a sound signal, pointing a yellow flag and hailing the boat's sail or bow number. The boat may then exonerate herself by taking a penalty as described in Attachment E, RRS Appendix P as changed by these SIs. This changes appendix P2.1. Action or lack of action by the international jury under this instruction shall not be grounds for redress. This changes rule 62.1(a).
- 14.4 Jury vessels may be positioned anywhere on the course area. Their position at any time shall not be grounds for granting redress. This changes RRS 60.1(b) and 62.1(a).
- 14.5 A boat that has taken a penalty under RRS 31, or 44.1 shall complete an acknowledgment form at the jury desk or complete the online form within the protest time limit.

**14.6** RRS Appendix P as changed by the sailing instructions and is stated in full in Attachment E.

**14.7** RRS Appendix T (ARBITRATION) will apply.

## **15 TIME LIMITS AND TARGET TIMES**

**15.1** The target time for each race is 60-75 minutes. Failure to meet the target time shall not be grounds for granting redress. This changes RRS 60.1(b) and 62.1(a).

**15.2** Boats failing to finish within 30 minutes after the first boat sails the course and finishes will be scored time limit expired (TLE) without a hearing. The score for TLE will be the number of finishers plus two points, but not worse than DNF. This changes RRS 35, A4 and A5.

**15.3** The race committee will lower the finish line orange flags with one sound to indicate that the time limit has expired.

## **16 PROTESTS AND REQUESTS FOR REDRESS**

**16.1** An international jury (IJ) will be appointed in accordance with RRS Appendix N.

**16.2** The jury desk will be in the regatta office. The protest room will be in the Model room which is located on the main floor of the Eastern Yacht Club.

**16.3** Protest, and request for redress or reopening forms and acknowledgement forms will be available at the jury desk. Protests and requests for redress or reopening or completed acknowledgement forms shall be delivered to the jury desk within the appropriate time limit.

**16.4** The protest time limit is 60 minutes after the display of code flag B (BRAVO) per SI 5.3. This will be displayed as soon as practicable as the boats return to the harbor. The protest time limit will be posted on the official notice board. The same time limit applies to protests by the race committee and jury about incidents they observe in the racing area and for requests for redress. This changes RRS 61.3 and 62.2.

**16.5** Notices will be posted no later than 30 minutes after the protest time limit to inform competitors of hearings in which they are parties or named as witnesses.

**16.6** Notices of protests by the race committee or jury will be posted to inform boats under RRS 61.1(b).

**16.7** A list of boats that have been penalized under Instruction 14.6 for breaking RRS 42 will be posted.

**16.8** Breaches of SI 2, 18, 22, 24, 25 and 26 will not be grounds for a protest by a boat. This changes RRS 60.1(a).

**16.9** On the last day of racing a request for redress based on a jury decision shall be delivered no later than 30 minutes after the decision was posted. This changes RRS 62.2.

**16.10** Decisions of the international jury will be final as provided in RRS 70.5.

## **17 SCORING**

**17.1** The Low Point Scoring System, Appendix A4, will be used except as modified below

**17.1.1.** When fewer than 6 races have been completed, a boat's score will be the total of her race scores.

**17.1.2.** After the completion of 6 or more races, a boat's score will be the total of her race scores excluding her worst score

**17.2** To request correction of an alleged error in posted race or series results, a boat may complete a scoring inquiry form available at the race office and returnable to the race office, forms may also be completed on line.

## **18 SAFETY REGULATIONS**

**18.1** Prior to the warning of her first race of each day, each boat shall check-in with, and be recognized by the race committee vessel located to the leeward of the RC mid-line signal vessel in the starting area and displaying the **Code Flags L over A**. Each boat shall pass close aboard on starboard tack and hail her bow number. When a boat has been recognized, the race committee will hail the boat's bow number.

**18.2** A boat that retires from a race, leaves, or returns to the racing area between races shall notify the race committee as soon as possible.

**18.3** A boat not leaving the harbor for any of the day's racing shall inform the race committee as soon as possible.

## **19 REPLACEMENT OF CREW OR EQUIPMENT**

**19.1** Substitution of competitors will not be allowed without written approval of the race committee.



**19.2** Substitution of damaged or lost equipment will not be allowed unless authorized by the race committee. Requests for substitution shall be made to the committee at the first reasonable opportunity.

## **20 EQUIPMENT AND MEASUREMENT CHECKS**

**20.1** On the water, a boat can be instructed by a member of the race committee or the technical committee to proceed immediately to a designated area for inspection. Ashore, equipment may be inspected or measured at times specified in the class rules, the notice of race, and at the following time(s) 0800-0900 or 1700-1900 during the event.

## 21 OFFICIAL VESSELS

21.1 Official vessels will be marked as follows:

Category	Flag
Race committee vessels	Signal  Auxiliary 
Jury vessels	Blue and white flag w/ red number
Measurer / Technical Committee	Blue Flag with white "Official"
Press vessels	Red/Pink Flag with Black "M"
Coach and Support Boats	Blue flag with white number or white flag with blue numbers

## 22 SUPPORT BOATS

- 22.1** Support boats, including coach, press, and OA spectator boats, shall register at the race office during the check-in period and will be issued an identity flag, which shall always be prominently displayed when afloat. The person in charge of the competing boat(s) to which support boats are attached shall acknowledge the presence of a support boat on his registration form and pay any fee for the support boat decided by the OA.
- 22.2** Support boats shall comply with any additional directions given by the OA, the race committee or the jury, including requests for assistance with rescues. Failure to comply may result in the accreditation being withdrawn and all access to the club facilities, grounds and access to the docks being denied.
- 22.3** Support boats shall always be on call on the VHF channel 78.
- 22.4** Support boats shall comply with Class Rule Part III Section I.3
- 22.5** Support boats, team leaders, coaches and other support personnel, shall stay more than 150 meters from any competitor while all boats are racing and shall operate only in the area allowed in sailing instruction Attachment F.



**22.6** Support boats shall be kept in their assigned places as directed by the OA when either afloat or ashore.

## **23 TRASH DISPOSAL**

Trash may be placed aboard support boats, after the boat has finished racing for the day, in accordance with class rule I.3.

## **24 HAUL-OUT RESTRICTIONS AND OTHER RESTRICTIONS**

**24.1** Boats shall be kept in their assigned places as directed by the OA when ashore. While afloat, boats shall be kept on their OA-assigned mooring while afloat or at a mooring/dock they arrange in Marblehead Harbor. If at a privately arranged mooring/dock in Marblehead Harbor, the OA shall be informed of the boat's location.

**24.2** Boats shall be afloat by 1800 on Monday September 24, 2018.

**24.3** Boats shall not be hauled out and shall not remove their rudders during the regatta except with and according to the terms of prior written permission of the race committee.

**24.4** Boats shall not use dehumidifiers of any type from the close of check-in through the end of the regatta.

## **25 DIVING EQUIPMENT AND PLASTIC POOLS**

**25.1** Underwater breathing apparatus and plastic pools or their equivalent shall not be used around competing boats between the close of check-in and the end of the regatta.

## **26 RADIO COMMUNICATION**

**26.1** All boats shall carry a marine band VHF radio capable of receiving normal domestic and international channels, including at least the VHF channel and channels 16 and 78.

**26.2** Except in an emergency, a boat that is racing shall not make voice or data transmissions and shall not receive voice or data communication that is not available to all boats.

**26.3** The race committee will use the **VHF channel 78** to communicate with the fleet, and as a courtesy may use the radio to advise competitors of race information.

## **27 PRIZES**

**27.1** Prizes will be given in accordance with the Notice of Race 18.

**27.2** Additional prizes may be awarded at the discretion of the organizing authority.

## **28 DISCLAIMER of LIABILITY**

**28.1.** Competitors participate in the regatta entirely at their own risk. See RRS 4, Decision to Race. The organizing authority will not accept any liability for any damage or personal injury or death sustained in conjunction with or prior to, during, or after the regatta.

## **29 INSURANCE**

**29.1** The safety of a boat and her entire management shall be the sole inescapable responsibility of the owner's/owner's representative. It is the responsibility of the owner to provide insurance for the yacht covering potential damage to persons or property.

**29.2** Each boat shall hold adequate insurance including third-party insurance of minimum coverage of \$300,000.00US and it is the owner or owner's representative's sole and

inescapable responsibility to ensure that the insurance is in place and is adequate prior to participating in this event

**29.3** Evidence of insurance, as described in NOR 19.2, shall be provided at registration.

### **30 MEDIA RIGHTS**

**30.1** By entering the regatta, the owner (or charterer) and crew members on competing yachts shall grant, at no cost, the absolute right and permission to use their names, voices, images, likeness and biographical material, as well as representations of their yacht in any media (including but not limited to television, print and internet) to the International J/70 Class Association, the Eastern Yacht Club and event sponsors.

### **31 CONDUCT**

**31.1** It is the sole inescapable responsibility of the owner/owner's representative to ensure that all members of the crew, support personal and guests of the boat respect the rules of the Eastern Yacht Club and obey any reasonable request of a regatta official.

### **32 RACE OFFICIALS**

Regatta Chair: Doug Morgan, [j70worlds2018+chair@gmail.com](mailto:j70worlds2018+chair@gmail.com)

Principal Race Officer: Hank Stuart US IRO; m:585-414-6105; [hstuart8m@gmail.com](mailto:hstuart8m@gmail.com)

Jury Chairman: Warren Nethercote [wnethercote@eastlink.ca](mailto:wnethercote@eastlink.ca)

During the regatta as per RRS 90.1 the organizing authority will be represented by the following:

1. Cheryl Byrne (Sept 20-24) and Doug Morgan (Sept 25-29) – Regatta Chairs
2. Chris Howell – J/70 Class Executive Director
3. Alan McKinnon- Eastern Yacht Club Race Committee Chair

### **33 FURTHER INFORMATION**

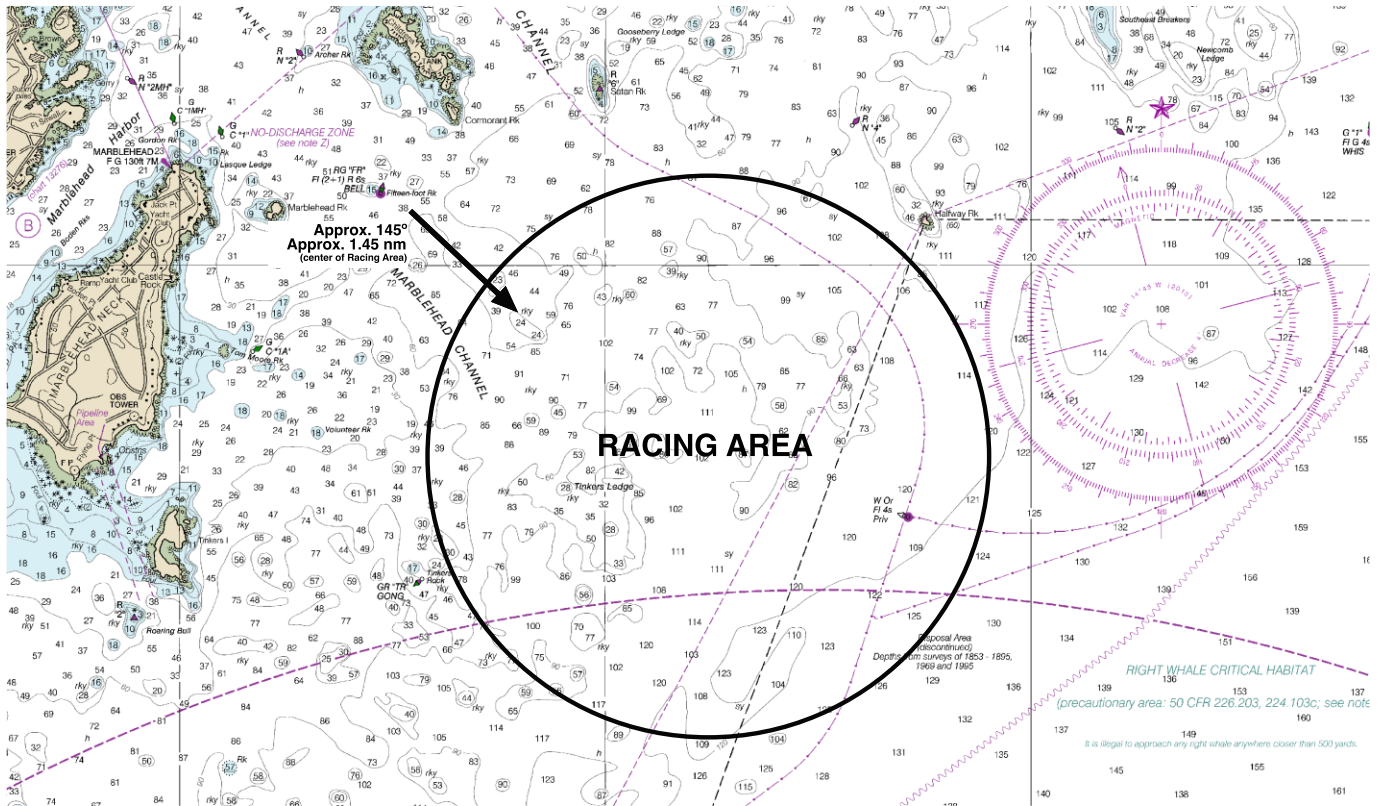
*For further information please contact the OA at*

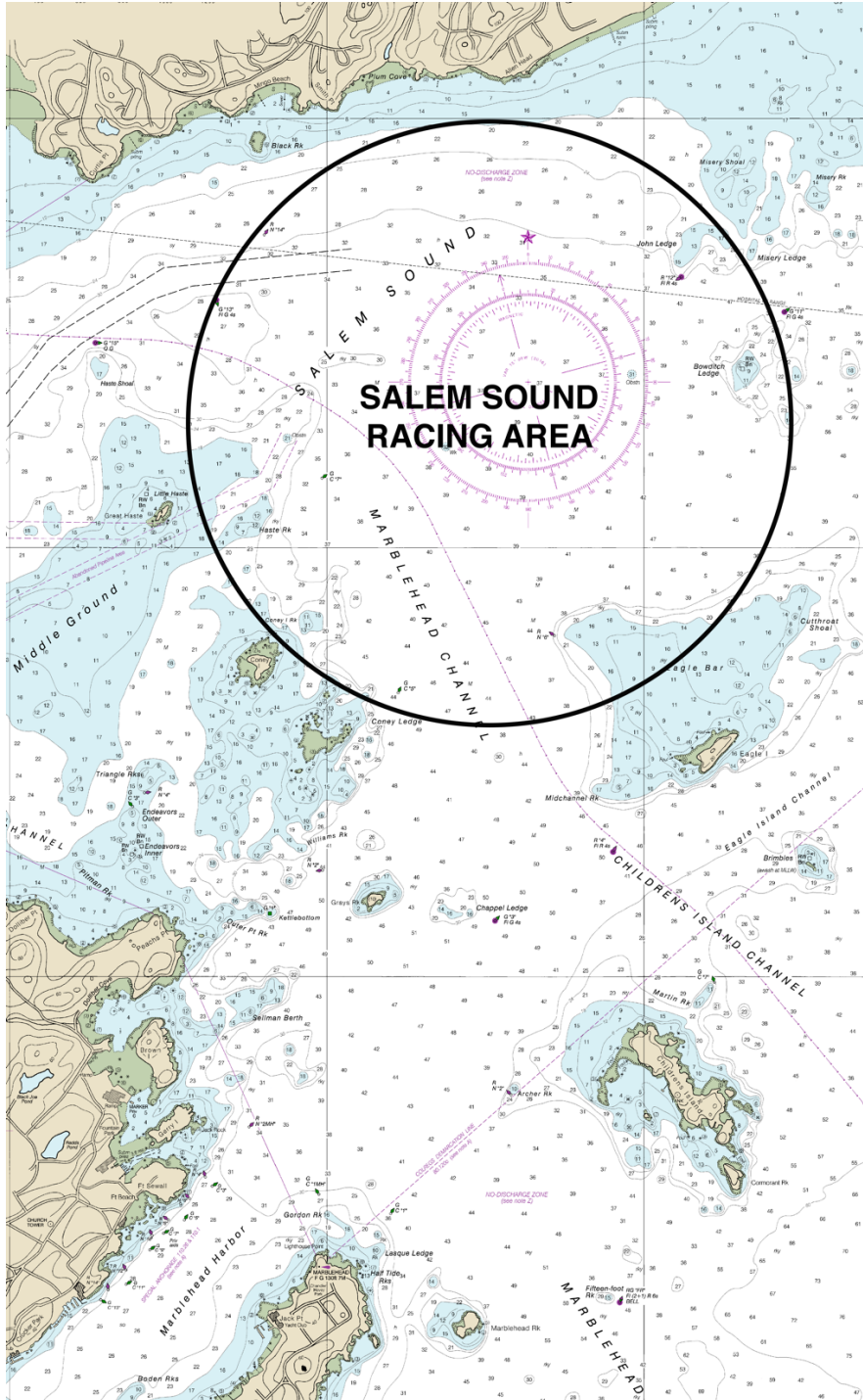
[j70worlds2018+chair@gmail.com](mailto:j70worlds2018+chair@gmail.com) or visit [www.easternyc.org](http://www.easternyc.org).

Event web site is:

<https://yachtscoring.com/emenu.cfm?eID=4512>

# ATTACHMENT A RACE AREAS

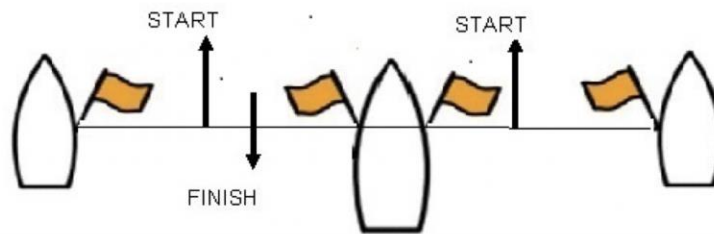
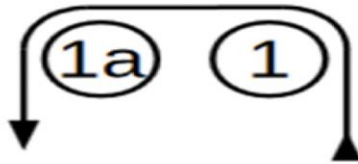




## ATTACHMENT B COURSE CHART

Course	Marks	
4	Start, 1, 1a, Gate (2s/2p), 1, 1a, Finish	<i>NOTE: If only one gate mark is set, boats shall leave the single mark to port.</i>

### COURSE DIAGRAM



## **ATTACHMENT C US SAILING PRESCRIPTIONS**

**The following US Sailing prescriptions will apply:**

Add 60.3

2. Rule 61.4 - US Sailing prescribes that no fee shall be charged for protest or request for redress.
3. Rule 67 - US Sailing prescribes that
  - a) A boat that retires from a race or accepts a penalty does not, by that action alone, admit liability for damages.
  - b) A protest committee shall find facts and make decisions only in compliance with the rules. No protest committee or US Sailing appeal authority shall adjudicate any claim for damages. Such a claim is subject to the jurisdiction of the courts.
  - c) A basic purpose of the rules is to prevent contact between boats. By participating in an event governed by the rules, a boat agrees that responsibility for damages arising from any breach of the rules shall be based on fault as determined by application of the rules, and that she shall not be governed by the legal doctrine of "assumption of risk" for monetary damages resulting from contact with other boats.
4. Rule 76.1 - US Sailing prescribes that an organizing authority or race committee shall not reject or cancel the entry of a boat or exclude a competitor eligible under the notice of race and sailing instructions for an arbitrary or capricious reason or for reason of race, color, religion, national origin, gender, sexual orientation, or age.

## ATTACHMENT D EVENT CLASS RULES

### I.3. SUPPORT BOATS

A **boat** shall receive no outside assistance from the time the **boat** leaves its dock or mooring until the **boat** has returned to the dock or mooring each day, except:

- (a) as provided for in RRS 41; or
- (b) the transfer of late arriving **crew**, food or drink prior to the preparatory signal of the first race of the day and the transfer of **crew**, food or drink after the **boat** has *finished* or retired from its last race of the day; or
- (c) assistance reasonably necessary for the safety of the **crew** or **boat** in the event of an emergency after the **boat** has *finished* or retired from its last race of the day, including emergencies due to weather, equipment failure or other causes.

### I.4 CORINTHIAN DIVISION

Regatta organizers will present awards for a Corinthian division. To be considered as a Corinthian team, Class Rule C.3 is modified so the entire crew, including the owner/driver, shall provide proof of a valid ISAF Group 1 classification at the time of registration. The Corinthian division shall be scored as a subdivision of the whole fleet using the competitor's actual scores.

# ATTACHMENT E

## RRS Appendix P (As Changed and Applicable)

### P1 OBSERVERS AND PROCEDURE

**P1.1** The protest committee may appoint observers, including protest committee members, to act in accordance with rule P1.2. A person with a significant *conflict of interest* shall not be appointed as an observer.

**P1.2** An observer appointed under rule P1.1 who sees a boat breaking rule 42 rule 49, J/70 Class Rule C3.3 (Crew Positioning) or J/70 Class Rule C9.3(b)(1) (Bowsprit Use), may penalize her by, as soon as reasonably possible, making a sound signal, pointing a yellow flag at her and hailing her sail number, even if she is no longer *racing*. A boat so penalized shall not be penalized a second time under rule 42, rule 49, J/70 Class Rule C3.3 (Crew Positioning) or J/70 Class Rule C9.3(b)(1) (Bowsprit Use), for the same incident.

### P2 PENALTIES

#### P2.1 First Penalty

When a boat is first penalized under rule P1.2 her penalty shall be a One-Turn Penalty under SI 14.3. If she fails to take it, she shall be disqualified without a hearing.

#### P2.2 Second and Subsequent Penalties

When a boat is penalized a second or subsequent time during the regatta, she shall promptly retire. If she fails to do so she shall be disqualified without a hearing and her score shall not be excluded.

#### P2.3 [Does not apply]

#### P2.4 Penalties Near the Finishing Line

If a boat is penalized under rule P2.2 and it was not reasonably possible for her to retire before *finishing*, she shall be scored as if she had retired promptly.

### P3 POSTPONEMENT, GENERAL RECALL OR ABANDONMENT

If a boat has been penalized under rule P1 and the race committee signals a postponement, general recall or abandonment, the penalty is cancelled, but it is still counted to determine the number of times she has been penalized during the regatta.

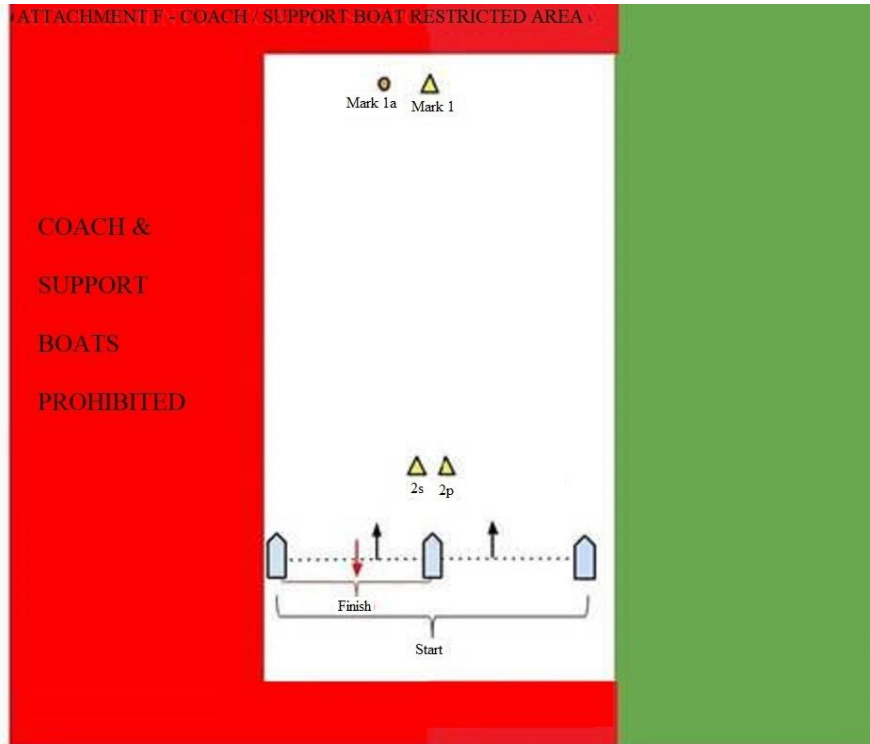
### P4 REDRESS LIMITATION

A boat shall not be given redress for an action by a member of the protest committee or its designated observer under rule P1.2 unless the action was improper due to a failure to take into account a race committee signal or a class rule.

#### P5 [Shall not apply]



## ATTACHMENT F COACH/SUPPORT BOAT RESTRICTED AREA



*As stated in SI 22.5: Support boats, team leaders, coaches and other support personnel, shall stay more than 150 meters from any competitor while racing and the prohibited area shown in red, and shall only operate in the areas as shown in green.*